

Rear motor mounting type

RWA-B

RWA-160R,B•200R,B•250R,B•320R,B

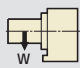

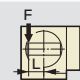
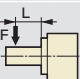
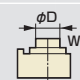
One of the most popular rear motor mounting types. Suitable for mounting on a compact machine tool for space saving.



RWA-160R,B

Specifications

Unit: mm

		RWA-160R,B	RWA-200R,B	RWA-250R,B	RWA-320R,B
Handedness	R	○	○	○	○
	L	—	—	—	—
Spindle diameter		φ100	φ120	φ140	φ180
Table diameter		φ160 or 200 (Option)	φ200 or 250 (Option)	φ250 (Option)	φ320 (Option)
Center height		135	160	160	210
Center bore	Nose diameter	φ55H7×45	φ65H7×45	φ80H7×45	φ115H7×45
	Through-bore	φ40	φ45	φ50	φ85
Table T-slot width		12H8	12H8	12H8	14H8
Guide block width		14h7	18h7	18h7	18h7
Servo motors (for FANUC)		αiS2	αiS4	αiS8	αiS8
Inertia converted into motor shaft $\times 10^{-3}\text{kg}\cdot\text{m}^2$		0.56	0.64	0.97	0.84
Net weight kg		55	77	95	165
Speed reduction ratio		1/72	1/72	1/90	1/120
Table max. rpm min^{-1} (Motor rpm: $3,000\text{min}^{-1}$)		41.6	41.6	33.3	25
Indexing accuracy (the sum) arcsec		25	20	20	20
Clamp system		Pneumatic	Pneumatic	Pneumatic	Pneumatic
Clamp torque \swarrow pneumatic pressure 0.49MPa N·m		500	800	1,000	1,500
Allowable work weight	Vertical setting  kg	100 (200)	125 (250)	125 (250)	175 (350)
	() : with tailstock  N	10,800	14,400	14,400	24,800
Allowable load (when table is clamped)	$F \times L$  N·m	500	800	1,000	1,500
	$F \times L$  N·m	780	1,900	1,900	4,700
Allowable work inertia $J = \frac{W \cdot D^2}{8}$  $\text{kg}\cdot\text{m}^2$		0.64	1.25	1.95	4.48

CE correspondence model

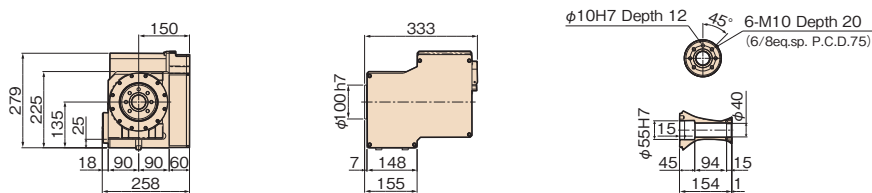
Tech.Info. Servo motors of other manufacturers **P.70** When assembling a faceplate or a fixture with the main spindle **P.81**

Option High-precision Spec. **P.66**

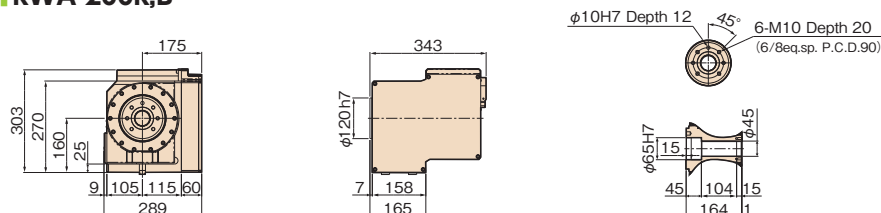
Dimensions

Unit: mm

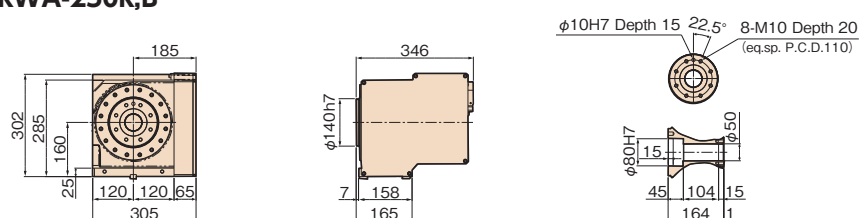
RWA-160R,B



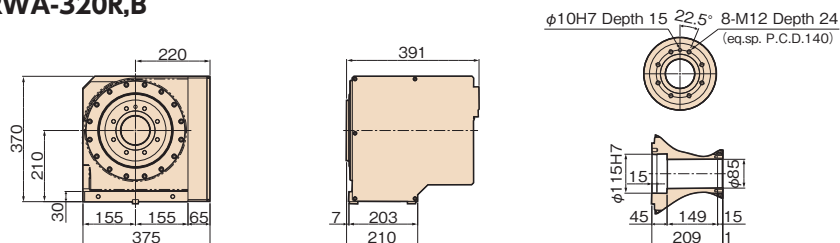
RWA-200R,B



RWA-250R,B



RWA-320R,B



Note: The above dimensions are for FANUC servo motors. The dimensions of servo motors of other manufacturers may be larger.

- RBS
- RBH
- RBM
- TBS
- RWE/RWA
RN
- RWH
- RWA-B**
- RWB
- RWB-K
- RCB
- RCH
- RCV
- Multi-Spindle
RWM
- TWA/TN
- TWS
- TWB
- Multi-Spindle
TWM
- RDS
- TDS
- TDB
- NC Controllers
- Accessories
- Options
- Technical Information

Clamping block and bolt

Unit: mm

	Type	Q'ty	T-slot pitch	T-slot width	A	B	C	D	E	F	G	H	I	J	K	L	M
RWA-160R,B	—	2	—	14	—	—	—	—	—	—	—	17	8	60	—	23	12
RWA-200R,B	—	2	—	18	—	—	—	—	—	—	—	21	11	65	—	28	16
RWA-250R,B	I	4	50 to 100	18	25	12	80	12	33	35	22	21	11	65	40	28	16
RWA-320R,B	I	4	50 to 132	18	30	15	90	16	31	43	25	21	11	70	46	28	16

Note 1: When using a machine with a T-slot pitch other than the above, use suitable clamping blocks and bolts that are available on the market, or order custom-made ones from TSUDAKOMA. (Option)

Note 2: Clamping blocks are not included in the RWA-160R,B and RWA-200R,B.

Type I

